



Bond Accountability Committee Meeting

July 15, 2015



Agenda

- Welcome & Introductions 4:30pm
- Public Comments 4:35pm
- Program Update 4:45pm
- BAC Discussion 6:00pm
- Wrap-Up 6:20pm
- Adjourn 6:30pm

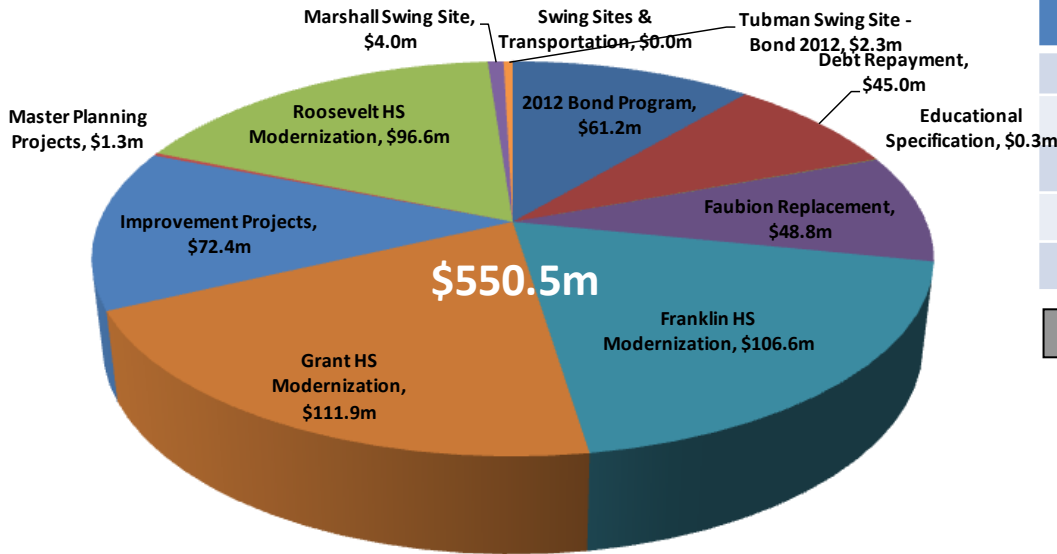


Public Comments



Program Update

Program Projected Budget Break-Down



Balanced Scorecard Program Status

Perspective	Last Meeting	Current
Overall	Green	Green
Budget	Green	Green
Schedule	Green	Green
Stakeholder	Green	Green
Equity	Green	Green

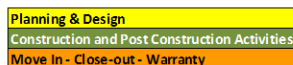
Comments

1. Franklin HS is in the Construction Phase
2. Roosevelt HS in the Construction Phase
3. Faubion PK-8 is in the CD Design Phase
4. Grant HS is selecting a Design Firm
5. IP15 projects are all in the Construction Phase
6. Tubman Improvement Project is in the Construction Phase
7. IP16 is in Design with one firm and finalizing with another

Schedule

ONGOING PROJECTS

Projects	Construction Complete	2014				2015				2016				2017				2018			
		1 Qtr	2 Qtr	3 Qtr	4 Qtr	1 Qtr	2 Qtr	3 Qtr	4 Qtr	1 Qtr	2 Qtr	3 Qtr	4 Qtr	1 Qtr	2 Qtr	3 Qtr	4 Qtr				
Franklin HS	Mar 2017	[Gantt chart bars showing project progress]																			
Roosevelt HS	Nov 2017	[Gantt chart bars showing project progress]																			
Grant HS	Mar 2019	[Gantt chart bars showing project progress]																			
Faubion PK-8	Apr 2017	[Gantt chart bars showing project progress]																			
IP14	Aug 2014	[Gantt chart bars showing project progress]																			
IP15	Aug 2015	[Gantt chart bars showing project progress]																			
IP15-Science	Aug 2015	[Gantt chart bars showing project progress]																			
IP15-Maplewood	Aug 2015	[Gantt chart bars showing project progress]																			
Tubman Improve	Aug 2015	[Gantt chart bars showing project progress]																			
IP16	Aug 2016	[Gantt chart bars showing project progress]																			



Anticipated Progress Next Period

1. Franklin HS will be in the Construction Phase
2. Roosevelt HS will be in the Construction Phase
3. Faubion PK-8 will be selecting a general contractor
4. Grant will be in Master Planning
5. IP15 projects will be complete with summer work and completing elevators
6. Tubman Improvement Project will be complete

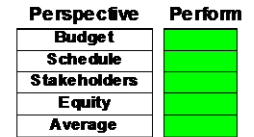
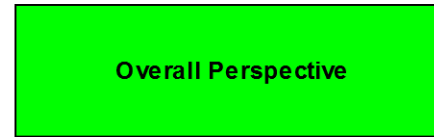


Program Update

Balanced Scorecard – Overall Perspective

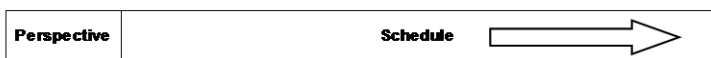
Narrative Comments:

- Roosevelt High School construction activities are in full swing. Expect temporary facilities to be in place and ready for students by mid August.
- Franklin High School construction operations began on time and are proceeding on plan.
- Faubion School replacement design team is developing construction documents and expects to begin demolition in the Fall. Land use hearing went well and the project is proceeding on plan.
- Construction activities began at 27 school sites for the Summer 2015 project and good weather is facilitating the work.
- Preparation continue at Marshall and Tubman. Expect both will be ready to accomodate students and staff in August 2015.



2012 Bond Projects

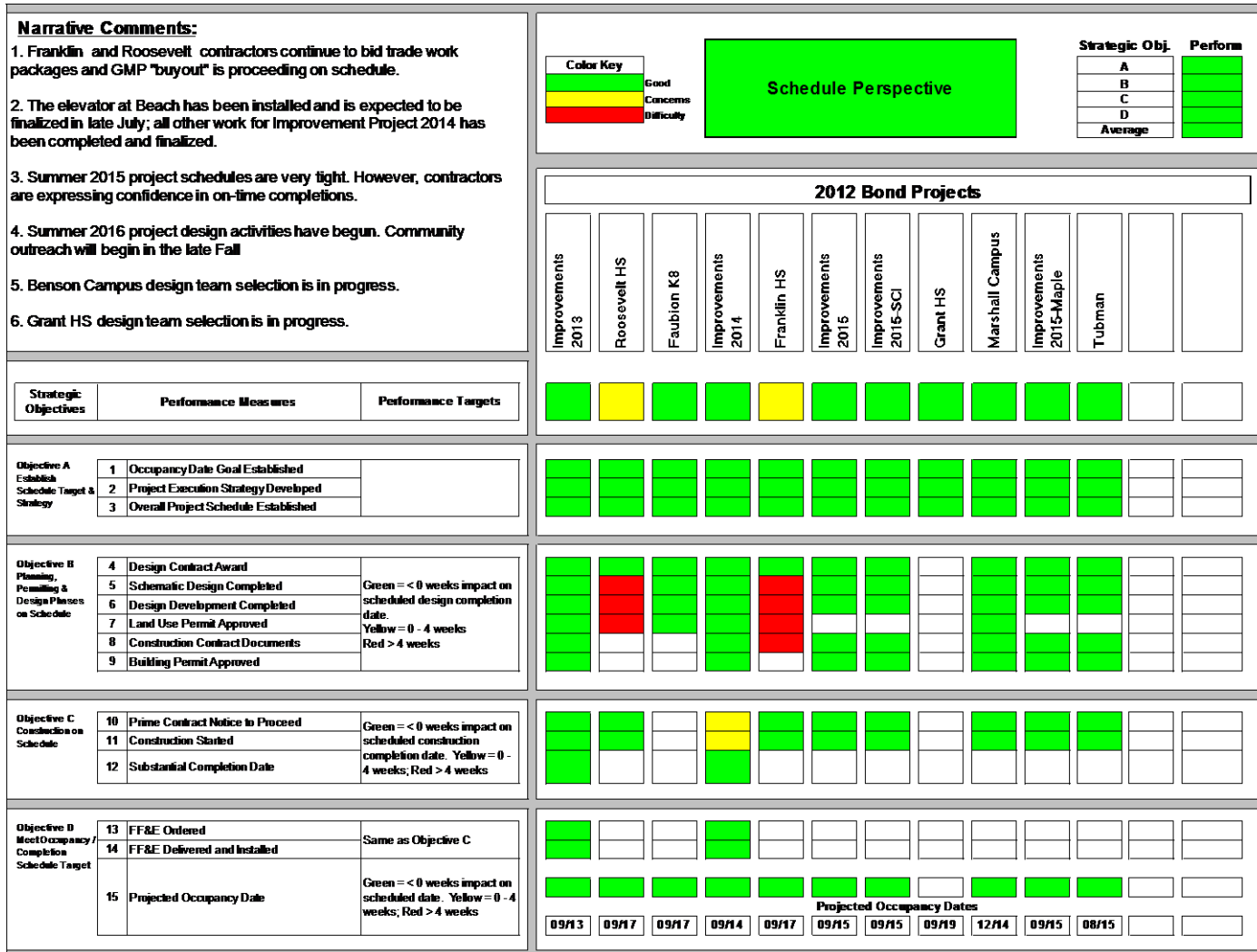
Improvements 2013	Roosevelt HS	Faubion K8	Improvements 2014	Franklin HS	Improvements 2015	Improvements 2015-SCI	Grant HS	Marshall Campus	Improvements 2015-Maple	Tubman	Program Contingency	Program Mgmt
-------------------	--------------	------------	-------------------	-------------	-------------------	-----------------------	----------	-----------------	-------------------------	--------	---------------------	--------------





Program Update

Balanced Scorecard – Schedule Perspective





Program Update

Balanced Scorecard – Stakeholder Perspective

Narrative Comments:

1. Stakeholder feedback continues to come in. The majority of the feedback is very positive, with some DAG scores dropping into the yellow range.

Color Key	
	Good
	Concerns
	Difficulty



Strategic Obj.	Perform
A	
B	
C	
Average	

2012 Bond Projects

Improvements 2013	Roosevelt HS	Faubion K8	Improvements 2014	Franklin HS	Improvements 2015	Improvements 2015-SCI	Grant HS	Marshall Campus	Improvements 2015-Maple	Tubman		
-------------------	--------------	------------	-------------------	-------------	-------------------	-----------------------	----------	-----------------	-------------------------	--------	--	--

Strategic Objectives	Performance Measures	Performance Targets
----------------------	----------------------	---------------------

--	--	--	--	--	--	--	--	--

Objective A Meets Educational Needs		
1	Project Scope Meets Educational Needs	Green: Rating of ≥ 4.0 (1 - 5 scale)
2	Design Meets Educational Needs	Yellow: 3.0 - 4.0
3	Construction Meets Educational Needs	Red: < 3.0

--	--	--	--	--	--	--	--	--

Objective B Meets Maintenance / Facility Needs		
4	Project Scope Meets Maint. / Facility Needs	Green: Rating of ≥ 4.0 (1 - 5 scale)
5	Design Meets Maint. / Facility Needs	Yellow: 3.0 - 4.0
6	Construction Meets Maint. / Facility Needs	Red: < 3.0

--	--	--	--	--	--	--	--	--

Objective C Design Advisory Group (DAG) Needs		
7	Master Planning: Scope Meets DAG Needs	Green: Rating of ≥ 4.0 (1 - 5 scale)
8	Design Meets DAG Needs	Yellow: 3.0 - 4.0;
9	Construction Meets DAG Needs	Red: < 3.0

--	--	--	--	--

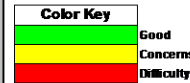


Program Update

Balanced Scorecard – Budget Perspective

Narrative Comments:

1. Some of the Bond Premium funds have been allocated to projects over the previous month. Most notably the remaining Grant HS escalation funds and Additional Criteria funding has been allocated, bringing Grant to a total budget of \$111.9M.
2. Construction has begun at FHS, RHS, Tubman, IP2015, IP2015-SCI and IP2015-Maplewood. All projects continue to forecast on budget.
3. With the completion of the Beach elevator, IP2014 will be wrapping up soon and projects approximately a \$200k savings.
4. The master planning budgets for Benson, Lincoln and Madison have been adjusted to reflect current anticipated scope. Project teams are working on budget allocation breakdowns.



Strategic Obj.	Perform
A	
B	
C	
D	
Average	

2012 Bond Projects

Improvements 2013	Roosevelt HS	Faubion K8	Improvements 2014	Franklin HS	Improvements 2015	Improvements 2015-SCI	Grant HS	Marshall Campus	Improvements 2015-Maple	Tubman	Program Contingency	Program Mgmt
-------------------	--------------	------------	-------------------	-------------	-------------------	-----------------------	----------	-----------------	-------------------------	--------	---------------------	--------------

Strategic Objectives	Performance Measures	Performance Targets
----------------------	----------------------	---------------------

Objective A Project Budget and Scope	1	Initial Cost Estimate of Approved Scope	≥ 10% Contingency Available
	2	Master Plan	Within Budgeted Amount

Objective B Planning & Design Costs within Budget	3	Projected Total P & D Costs	Within Budgeted Amount
--	---	-----------------------------	------------------------

Objective C Construction Costs within Budget	4	Construction Cost Award Price or GMP	Within Budgeted Amount
	5	Construction Cost Current Estimate thru 50% complete	>5% project level contingency

Objective D Project within Budget	6	Total Project Costs Within Budgeted Amount	Within Budgeted Amount
--------------------------------------	---	--	------------------------





Program Update

OSM Project Management Cost Report

Project Name	Current Budget	Previous Budget	Delta
Franklin HS Modernization	106,569,768	106,505,851	63,917
Grant HS Modernization	111,891,581	93,524,910	18,366,671
Roosevelt HS Modernization	96,617,431	96,617,431	-
Faubion Replacement	48,840,418	48,840,892	(474)
Improvement Project 2013	11,969,300	11,969,300	-
Improvement Project 2014	18,106,799	18,106,799	-
Improvement Project 2015	13,448,142	13,409,142	39,000
Improvement Project 2015 - Maplewood	1,644,527	1,244,527	400,000
Improvement Project 2015 - SCI	2,542,153	2,542,153	-
Improvement Project 2016	13,565,783	12,319,254	1,246,529
Improvement Project 2017	10,225,934	9,070,306	1,155,628
Improvement Project 2018	642,311	528,882	113,429
Improvement Project 2019	273,995	663,638	(389,643)
Master Planning - Benson HS	500,000	323,334	176,666
Master Planning - Cleveland HS	-	-	-
Master Planning - Jefferson HS	-	-	-
Master Planning - Lincoln HS	400,000	323,334	76,666
Master Planning - Madison HS	400,000	323,334	76,666
Master Planning - Wilson HS	-	-	-
Marshall Swing Site - Bond 2012	4,009,080	4,000,000	9,080
Tubman Swing Site - Bond 2012	2,335,000	2,300,000	35,000
Swing Sites & Transportation	-	-	-
Educational Specification	300,000	300,000	-
Debt Repayment	45,000,000	45,000,000	-
2012 Bond Program	61,225,944	57,212,889	4,013,055
	550,508,167	525,125,977	25,382,190

Notable Budget Changes

- **\$33M Bond Premium #2 added to the program. \$8M Additional Criteria “financing” removed from program. Net increase of \$25M.**
- **Full escalation and Additional Criteria funding allocated to GHS**
- **IP scopes and budgets adjusted for IP2016 – IP2019**
- **Escalation applied to IP2016**
- **\$400k allocated to Maplewood to cover bid delta**
- **Master Planning budgets adjusted to match current scope**



Program Update

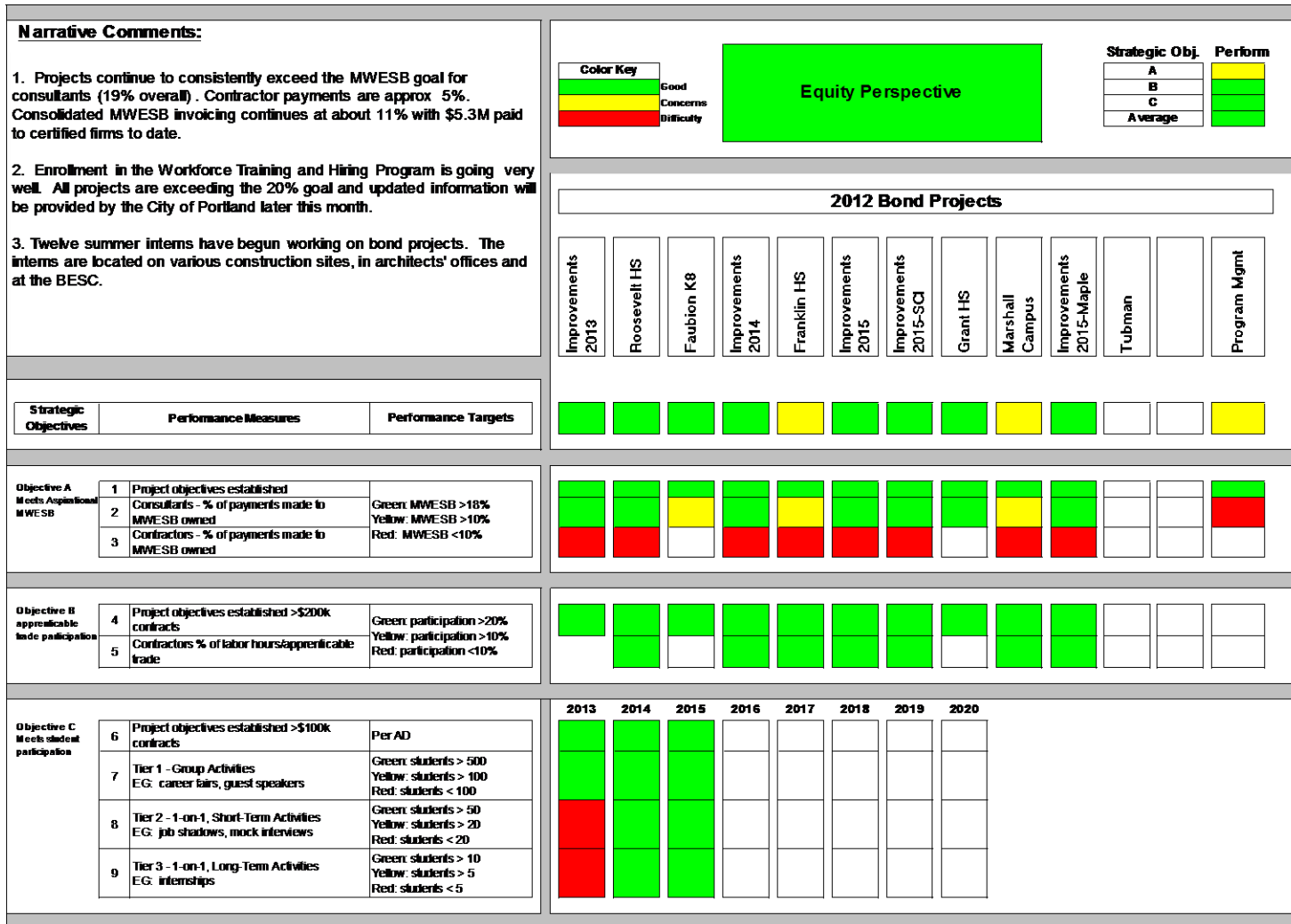
OSM Project Management Cost Report

Project Name	Original Project Budget	Project Budget Changes	Current Budget	Project Estimate At Completion	Forecasted Over/(Under)	Invoices Approved
Franklin HS Modernization	81,585,655	24,984,113	106,569,768	98,417,565	(8,152,203)	5,988,234
Grant HS Modernization	88,336,829	23,554,752	111,891,581	101,765,498	(10,126,083)	111,496
Roosevelt HS Modernization	68,418,695	28,198,736	96,617,431	88,287,431	(8,330,000)	6,589,325
Faubion Replacement	27,035,537	21,804,881	48,840,418	44,061,503	(4,778,915)	2,676,834
Improvement Project 2013	9,467,471	2,501,829	11,969,300	11,969,300	0	11,963,139
Improvement Project 2014	13,620,121	4,486,678	18,106,799	17,894,968	(211,832)	17,687,799
Improvement Project 2015	13,521,066	(72,924)	13,448,142	12,797,617	(650,525)	1,689,045
Improvement Project 2015 - Maplewood	0	1,644,527	1,644,527	1,550,696	(93,831)	121,731
Improvement Project 2015 - SCI	0	2,542,153	2,542,153	2,038,395	(503,758)	371,317
Improvement Project 2016	15,274,437	(1,708,654)	13,565,783	12,370,821	(1,194,962)	0
Improvement Project 2017	6,796,707	3,429,227	10,225,934	8,692,044	(1,533,890)	0
Improvement Project 2018	9,062,119	(8,419,808)	642,311	545,964	(96,347)	0
Improvement Project 2019	0	273,995	273,995	232,896	(41,099)	0
Master Planning - Benson HS	191,667	308,333	500,000	500,000	0	0
Master Planning - Cleveland HS	191,667	(191,667)	0	0	0	0
Master Planning - Jefferson HS	191,667	(191,667)	0	0	0	0
Master Planning - Lincoln HS	191,667	208,333	400,000	400,000	0	8,622
Master Planning - Madison HS	191,667	208,333	400,000	400,000	0	0
Master Planning - Wilson HS	191,667	(191,667)	0	0	0	0
Marshall Swing Site - Bond 2012	0	4,009,080	4,009,080	3,847,460	(161,620)	2,847,445
Tubman Swing Site - Bond 2012	0	2,335,000	2,335,000	2,138,629	(196,371)	23,651
Swing Sites & Transportation	9,550,000	(9,550,000)	0	0	0	0
Educational Specification	0	300,000	300,000	287,733	(12,267)	275,133
Debt Repayment	45,000,000	0	45,000,000	45,000,000	0	45,000,000
2012 Bond Program	93,181,361	(31,955,417)	61,225,944	39,207,663	(22,018,281)	11,516,848
	482,000,000	68,508,167	550,508,167	492,406,184	(58,101,983)	106,870,619



Program Update

Balanced Scorecard – Equity Perspective





Program Update

Project Updates

- Franklin High School
- Roosevelt High School
- Grant High School
- Faubion PK-8
- Tubman Campus
- IP 2014
- IP2015
- IP2015-SCI
- IP2015-Maplewood
- IP2016
- Master Planning



Project Description

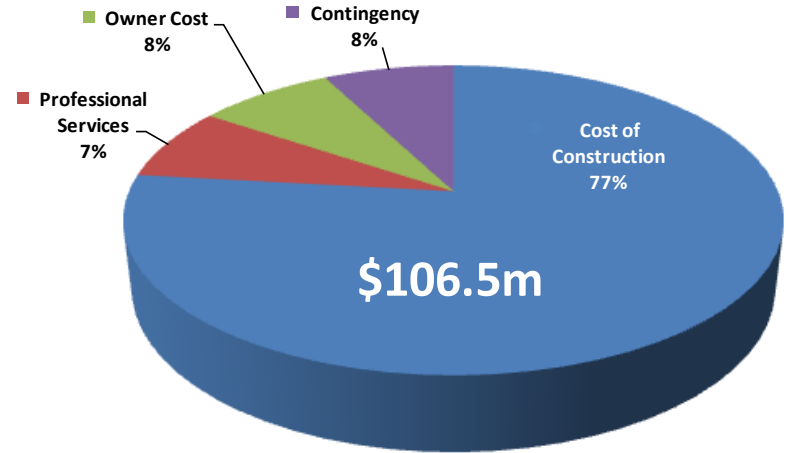
Brief Project Description: Full campus modernization to accommodate a student capacity of 1,700 and a core capacity of 1,700 students based on a master planning process that included stakeholder input. All campus functions have been relocated to the Marshall Campus.

Current Project Phase: Construction
Construction Start: Summer of 2015
Construction Duration: 21.6 Months
Scheduled Completion: Summer of 2017
Design Firm: DOWA-IBI Group
Contractor: Skanska

Comments

1. **Bidding has been completed on:**
 - Bid Package #1 (Site work/UG Utilities)
 - Bid Package #2 (Gym and Exterior Historical Renovation)
 - Bid Package #3 (Structural Package all sectors except 7)
2. **BP#4 (Interior Fit and Finish) bids are due 7/16/15**
3. **The Contractor mobilized to site in early June working out of temporary offices within the main building. Installation of job site trailers is expected to be complete as of July 6th.**
4. **Site grubbing and clearing has begun. Stadium grandstands have been demolished.**

Projected Budget Breakout



Photos



FHS Southern Entrance



Cut and fill of earthwork on the field



Compaction of relocated soil



Asphalt grinding

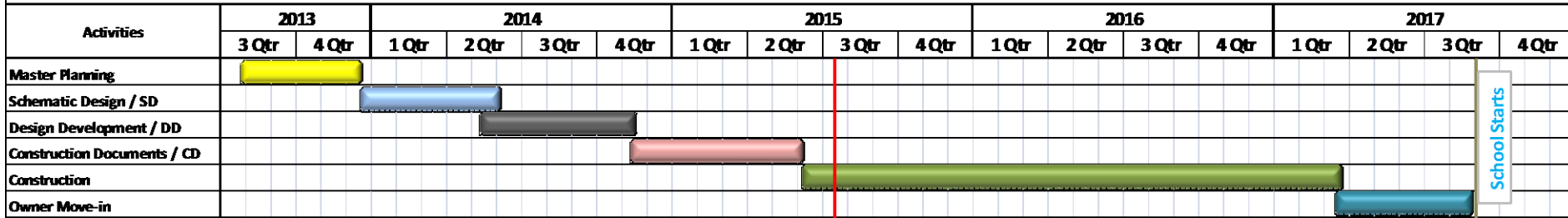


View of the wood shop



Schedule

Summary Schedule



Significant Schedule Milestone Assessment

Significant Milestone Activity Name	Project Director Baseline (PDB)		Schedule Update				Actual					
	Start	Finish	Start	Start Delta from PDB *	Finish	Finish Delta from PDB*	Start	Start Delta from PDB*	Start Delta from Update*	Finish	Finish Delta from PDB*	Finish Delta from Update*
	Master Planning	26-Aug-13	20-Nov-13	26-Jul-13	-31	16-Dec-13	26	26-Jul-13	-31	0	16-Dec-13	26
Request Proposals by CM/GC	31-Oct-13	31-Oct-13	13-Nov-13	13	13-Nov-13	13	13-Nov-13	13	0	13-Nov-13	13	0
Master Plan Approved by PPS BOE	20-Nov-13	20-Nov-13	16-Dec-13	26	16-Dec-13	26	16-Dec-13	26	0	16-Dec-13	26	0
CM/GC Notice To Proceed (Precon)	15-Jan-14	15-Jan-14	22-Jan-14	7	22-Jan-14	7	17-Mar-14	61	54	17-Mar-14	61	54
Schematic Design / SD	21-Nov-13	5-Mar-14	19-Nov-13	-2	2-Jun-14	89	16-Dec-13	25	27	2-Jun-14	89	0
Approve Schematic Design by PPS	5-Mar-14	5-Mar-14	27-May-14	83	2-Jun-14	89	27-May-14	83	0	2-Jun-14	89	0
Design Development / DD	6-Mar-14	14-Jul-14	12-May-14	67	10-Oct-14	88	5-May-14	60	-7	10-Oct-14	88	0
Construction Documents / CD BP #1	15-Jul-14	----	13-Oct-14	90	24-Feb-15	----	11-Nov-14	119	29	24-Feb-15	----	0
Construction Documents / CD BP #2	----	----	13-Oct-14	----	16-Mar-15	----	13-Oct-14	----	0	16-Mar-15	----	0
Sign GMP	15-Sep-14	15-Sep-14	11-May-15	238	11-May-15	238	11-May-15	238	0	11-May-15	238	0
Construction Documents / CD BP #3	----	13-Feb-15	13-Oct-14	----	8-Jun-15	115	13-Oct-14	----	0	8-Jun-15	115	0
CM/GC Begin Mobilize to site	16-Mar-15	16-Mar-15	8-Jun-15	84	8-Jun-15	84	8-Jun-15	84	0	8-Jun-15	84	0
Issue Demo Permit (BP #1)	17-Dec-14	----	15-Jun-15	180	15-Jun-15	----	12-Jun-15	177	-3	12-Jun-15	----	-3
Issue Building Permit (BP #2)	----	----	6-Jul-15	----	6-Jul-15	----	6-Jul-15	----	0	6-Jul-15	----	0
Issue Building Permit (BP #3)	----	10-May-15	17-Aug-15	----	17-Aug-15	99						
Substantial Completion	17-Mar-17	17-Mar-17	17-Mar-17	0	17-Mar-17	0						
Owner Move In	21-Mar-17	23-Aug-17	13-Mar-17	-8	24-Aug-17	1						

Activity has reached some or all completion

* Calendar Days

BP = Bid Package

BP #1: Civil-erosion control, clearing, site demolition, grading, utilities/Hazardous Material Abatement/Demolition-mass (building removal)

BP #2: Selective demolition (inside historic bldgs)/Historic renovations- exterior (structural upgrades inc. (roof), window restoration, brick, terracotta, wood work, roofing)/Historic renovations - interior (window restoration)/Sector 7 structural

BP #3: All other work

Master Plan	4.8 months
Activity Durations	
SDs	5.6 months
DDs	5.3 months
CDs	7.0 months
Total Design	17.8 months
Construction	21.6 months



Project Description

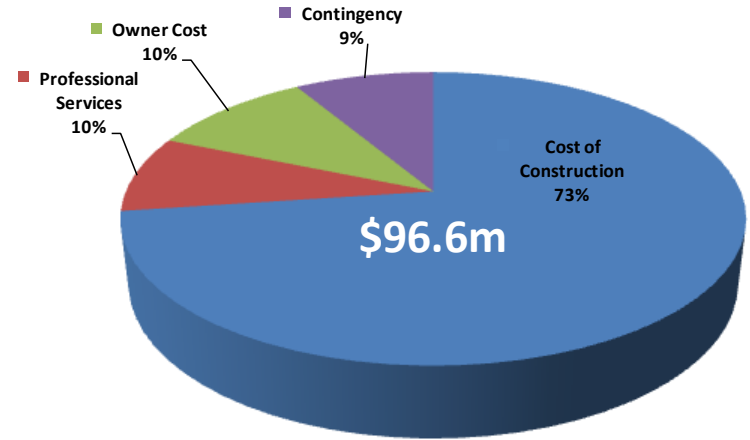
Brief Project Description: Full campus modernization to accommodate a student capacity of 1,350 and a core capacity of 1,700 based on master planning and schematic design processes that included stakeholder input. All students are to be housed on site during the phased project construction.

Current Project Phase: Construction
Construction Start: Spring of 2015
Construction Duration: 31.1 Months
Scheduled Building Completion: Summer of 2017
Design Firm: Bassetti Architects
Contractor: Lease Crutcher Lewis

Comments

1. Portable Classroom construction started early on June 15, 2015.
2. Theater building and Boiler Building were turned over to Contractor on June 26.
 - Demolition is ongoing
3. All Temporary and Portable building permits have been received.
4. Final Bldg permit now scheduled to be complete on 8/15/15.
5. School is functioning with summer classes during construction.

Projected Budget Breakout



Photos



Phase I Music Room Demolition



Windows Removed – Demo Prep



Concrete Under Tennis Courts

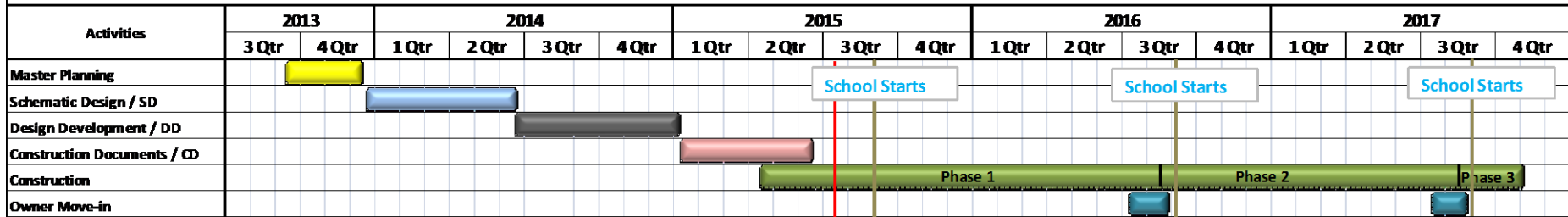


Former Faubion Portable Classrooms Staged at RHS



Schedule

Summary Schedule



Significant Schedule Milestone Assessment

Significant Milestone Activity Name	Project Director Baseline		Schedule Update				Actual					
	Start	Finish	Start	Start Delta from PDB *	Finish	Finish Delta from PDB*	Start	Start Delta from PDB*	Start Delta from Update*	Finish	Finish Delta from PDB*	Finish Delta from Update*
Master Planning	26-Aug-13	20-Nov-13	12-Sep-13	17	22-Nov-13	2	12-Sep-13	17	0	16-Dec-13	26	24
Schematic Design / SD Approved	21-Nov-13	5-Mar-14	17-Dec-13	26	30-May-14	86	17-Dec-13	26	0	23-Jun-14	110	24
Design Development / DD Finalized	6-Mar-14	14-Jul-14	24-Jun-14	110	9-Jan-15	179	24-Jun-14	110	0	9-Jan-15	179	0
Construction Documents - BP #1	15-Jul-14	----	10-Jan-15	179	6-Mar-15	----	12-Jan-15	181	2	20-Mar-15	----	14
Establish GMP	15-Sep-14	15-Sep-14	6-Mar-15	172	6-Mar-15	172	2-Apr-15	199	27	2-Apr-15	199	27
CM/GC Mobilize to site	16-Mar-15	16-Mar-15	15-Apr-15	30	15-Apr-15	30	15-Apr-15	30	0	15-Apr-15	30	0
Issue Demo Abatement Permit - BP #1	17-Dec-14	----	25-Mar-15	98	20-Apr-15	----	20-Mar-15	93	-5	28-Apr-15	----	8
Construction Documents - BP #2	----	12-Feb-15	10-Jan-15	----	5-Jun-15	113	12-Jan-15	----	2	12-Jun-15	120	7
Issue Grading/Foundation Permit - BP #1	----	----	20-Mar-15	----	29-May-15	----	20-Mar-15	----	0	18-Jun-15	----	20
Issue Final Building Permit - BP #2	----	23-Jan-15	29-May-15	----	21-Aug-15	210	12-Jun-15	----	14			
Construction - Phase 1 - Theater/Gym	16-Mar-15	----	16-Jun-15	----	12-Aug-16	----	15-Apr-15	30	-62			
Construction - Phase 2 - Main Building	----	----	13-Jun-16	----	17-Aug-17	----						
Construction - Phase 3 - Site	----	17-Mar-17	13-Jun-16	----	3-Nov-17	----						
Owner Move In - Phase 1	21-Mar-17	----	11-Jul-16	-253	24-Aug-16	----						
Owner Move In - Phase 2	----	23-Aug-17	17-Jul-17	----	24-Aug-17	1						
Building Substantial Completion	17-Mar-17	17-Mar-17	17-Aug-17	153	17-Aug-17	153						

Activity has reached some or all completion dates	* Calendar Days
BP = Bid Package	
Construction Phasing:	
Phase 1 - New Gymnasium/Classroom Wing/Theater/Renovated Building for New Arts & Media Center	
Phase 2 - Main Building Fully Renovated	
Phase 3 - Sitework/ Ball Fields/Demolition of Cafeteria, Library & Removal of Temporary Facilities	

Master Plan	3.2 months
Activity Durations	
SDs	6.3 months
DDs	6.6 months
CDs	5.0 months
Total Design	17.9 months
Construction	31.1 months



Project Description

Brief Project Description: Full campus modernization to accommodate a student capacity of 1,700 and a core capacity of 1,700 students based on a master planning process that includes stakeholder input. All campus functions are to be relocated to the Marshall Campus during construction.

Current Project Phase: Design Firm Selection Process

Construction Start: Summer of 2017

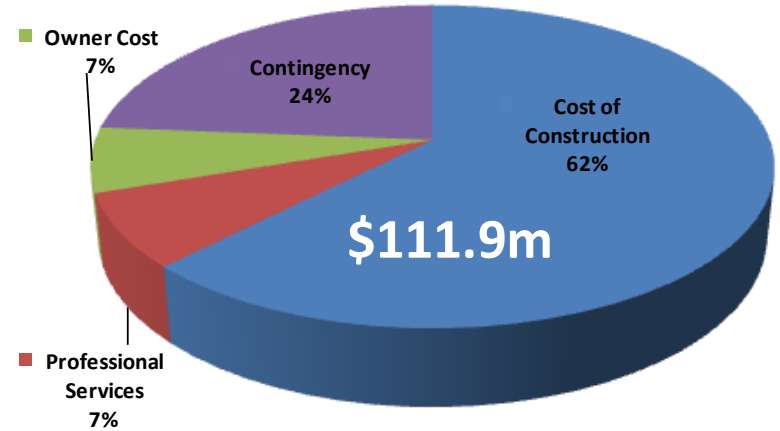
Construction Duration: 21.4 Months

Scheduled Completion: Summer of 2019

Design Firm: To be Determined

Contractor: To Be Determined

Projected Budget Breakout



Comments

1. Project budget has been adjusted from \$93.5m to \$111.9m
 - Budget breakout consideration is ongoing
2. Design selection process ongoing
3. Hazmat survey is complete
4. Land Title Survey is complete
5. DAG selection is ongoing
6. Stakeholder meetings with GHS staff have begun

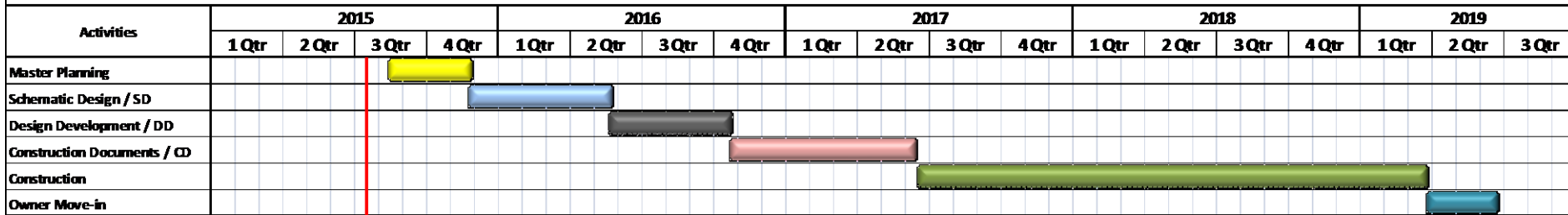
Photos





Schedule

Summary Schedule



Significant Schedule Milestone Assessment

Significant Milestone Activity Name	Project Director Baseline (PDB)		Schedule Update				Actual					
	Start	Finish	Start	Start Delta from PDB*	Finish	Finish Delta from PDB*	Start	Start Delta from PDB*	Start Delta from Update*	Finish	Finish Delta from PDB*	Finish Delta from Update*
Prepare, Release Design Firm RFP	16-Mar-15	10-Apr-15	4-Feb-15	-40	31-Mar-15	-10	28-Jan-15	-47	-7	29-Jun-15	80	90
Design Notice to Proceed	1-Jul-15	1-Jul-15	19-Aug-15	49	19-Aug-15	49						
Master Planning	1-Jul-15	9-Oct-15	19-Aug-15	49	25-Nov-15	47						
Schematic Design	10-Oct-15	4-Apr-16	25-Nov-15	46	20-May-16	46						
Master Plan Approved by PPS BOE	9-Oct-15	9-Oct-15	1-Dec-15	53	1-Dec-15	53						
Request Proposals by CM/GC	6-Nov-15	14-Dec-15	25-Dec-15	49	25-Jan-16	42						
CM/GC Notice To Proceed (Precon)	4-Feb-16	4-Feb-16	4-Feb-16	0	4-Feb-16	0						
Design Development	5-May-16	10-Sep-16	20-May-16	15	26-Oct-16	46						
Construction Documents	11-Sep-16	1-May-17	26-Oct-16	45	15-May-17	14						
Sign GMP	7-Oct-16	7-Oct-16	16-Nov-16	40	16-Nov-16	40						
Building Permit	11-Mar-17	9-Jun-17	15-May-17	65	10-Sep-17	93						
CM/GC Mobilize to site	15-Jun-17	15-Jun-17	15-Jun-17	0	15-Jun-17	0						
Substantial Completion	20-Mar-19	20-Mar-19	20-Mar-19	0	20-Mar-19	0						
Owner Move In	2-May-19	20-Jun-19	23-Apr-19	-9	20-Jun-19	0						

Activity has reached some or all completion dates

* Calendar Days

Master Plan	3.3 months
Activity Durations	
SDs	5.9 months
DDs	5.3 months
CDs	6.7 months
Total Design	17.9 months
Construction	21.4 months

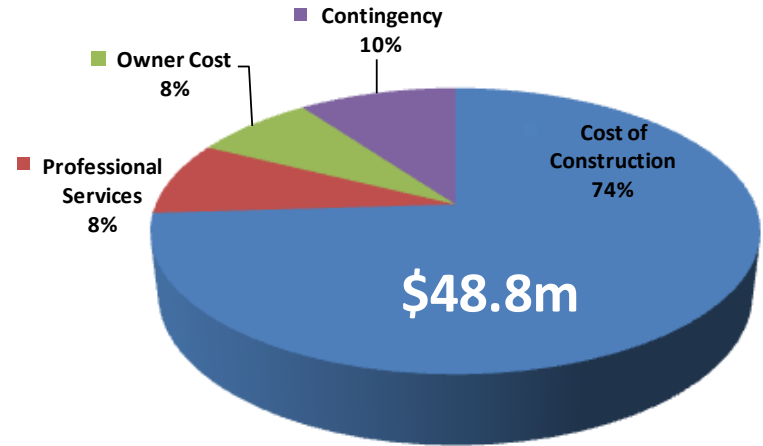


Project Description

Brief Project Description: In direct partnership with Concordia University for a full campus replacement, this project will be constructed based on a master planning process that included stakeholder input. All campus functions are to be relocated during construction.

- Current Project Phase:** Construction Documents
- Construction Start:** 4th Quarter of 2015 (Demo)
- Construction Duration:** 18.0 Months
- Scheduled Completion:** Summer of 2017
- Design Firm:** BOORA
- Contractor:** TBD

Projected Budget Breakout



Comments

- 1. Construction Documents 50%**
- 2. Land Use hearing occurred on June 15th with no opposing testimony**
- 3. Land Use Decision of Approval released by the City of Portland June 29th**
- 4. Faubion School has just completed the first phase of packing and moving items to the Tubman campus for the start of school on August 27th**

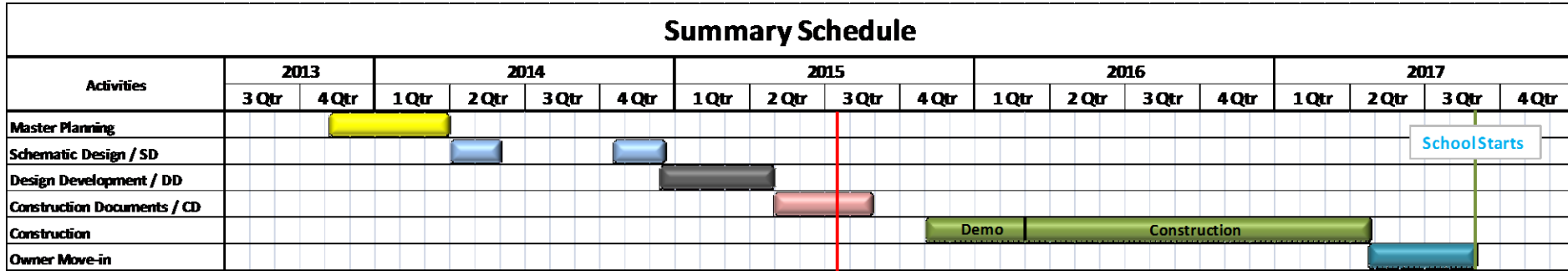
Photos





Schedule

Summary Schedule



Significant Schedule Milestone Assessment

Significant Milestone Activity Name	Baseline (BL)		Schedule Update				Actual					
	Start	Finish	Start	Start Delta from BL*	Finish	Finish Delta from BL*	Start	Start Delta from BL*	Start Delta from Update	Finish	Finish Delta from BL*	Finish Delta from Update
Master Planning	4-Oct-13	5-Feb-14	4-Oct-13	0	5-Feb-14	0	9-Nov-13	36	36	31-Mar-14	54	54
Schematic Design / SD	4-Nov-14	6-Jan-15	1-May-14	-187	30-Nov-14	-37	24-Apr-14	-194	-7	17-Dec-14	-20	17
Design Development / DD	5-Feb-15	11-Jun-15	1-Dec-14	-66	30-Apr-15	-42	18-Dec-14	-49	17	1-May-15	-41	1
Land & Building Permits	6-Jan-15	25-Mar-16	27-May-14	-224	31-Dec-15	-85	27-May-14	-224	0			
Construction Documents / CD	11-Jun-15	2-Nov-15	1-May-15	-41	3-Sep-15	-60	1-May-15	-41	0			
Request GC Proposals - Step 1	9-Dec-15	9-Dec-15	31-Jul-15	-131	23-Jul-15	-139	30-Jun-15	-162	-31			
Review GC Proposals - Step 1	9-Dec-15	12-Jan-16	24-Jul-15	-138	18-Aug-15	-147						
GC Notice To Proceed	29-Jan-16	29-Jan-16	1-Nov-15	-89	1-Nov-15	-89						
GC Mobilize to site	13-Jun-16	13-Jun-16	2-Nov-15	-224	16-Nov-15	-210						
Substantial Completion	25-Apr-17	25-Apr-17	25-Apr-17	0	25-Apr-17	0						
Owner Move In	8-Jun-17	10-Aug-17	15-May-17	-24	1-Sep-17	22						

Activity has reached some or all dates

* Calendar Days

Master Plan	4.7 months
Activity Durations	
SDs	3.9 months
DDs	4.5 months
CDs	4.2 months
Total Design	12.5 months
Construction	18.0 months

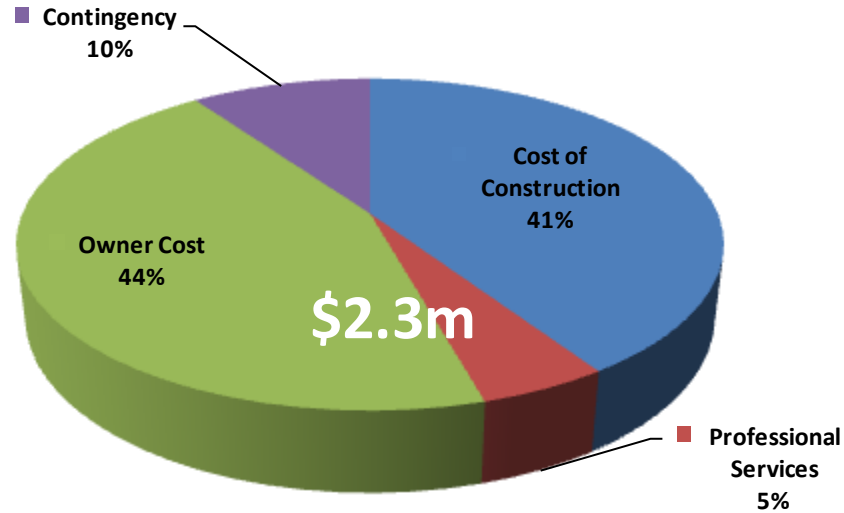


Project Description

Brief Project Description: Campus improvements to facilitate the occupancy by the Faubion PK-8 campus. Improvements are focused on accessibility, safety, and program adjustments for PK-8 users.

Current Project Phase: Construction
Construction Start: May 2015
Construction Duration: 2.2 Months
Scheduled Completion: August 2015
Design Firm: BOORA Architects Inc.
Contractor: 2KG Contractors Inc.

Projected Budget Breakout



Comments

- 1. Move Update:** the move out of Faubion has begun and is 33% complete
 - Phase 1 completed 6/22-6/25
 - Phase 2 to begin 7/13
 - Phase 3 first week of August
- 2. Construction Update:**
 - Demo is 75% complete
 - Abatement is 50% complete
 - Painting is 80% complete

Photos





Schedule

Summary Schedule								
Activities	2015							
	Jan	Feb	Mar	Apr	May	Jun	Jul	Aug
Design and Permits			■					
Construction Bidding				■				
Construction and Move in						■		

Significant Schedule Milestone Assessment

Significant Milestone Activity Name	Baseline (BL)		Schedule Update				Actual					
	Start	Finish	Start	Start Delta from BL*	Finish	Finish Delta from BL*	Start	Start Delta from BL*	Start Delta from Update	Finish	Finish Delta from BL*	Finish Delta from Update
Schematic Design	3-Nov-14	28-Nov-14	3-Nov-14	0	28-Nov-14	0	3-Nov-14	0	0	28-Nov-14	0	0
Design Development	1-Dec-14	30-Jan-15	1-Dec-14	0	30-Jan-15	0	1-Dec-14	0	0	30-Jan-15	0	0
Construction Documents / CD	2-Feb-15	1-Mar-15	2-Feb-15	0	1-Mar-15	0	2-Feb-15	0	0	3-Apr-15	33	33
Permit submittal and review	3-Apr-15	22-May-15	3-Apr-15	0	22-May-15	0	3-Apr-15	0	0	1-May-15	-21	-21
Request GC Proposals	3-Apr-15	21-Apr-15	3-Apr-15	0	21-Apr-15	0	3-Apr-15	0	0	21-Apr-15	0	0
Review GC Proposals	22-Apr-15	23-Apr-15	22-Apr-15	0	23-Apr-15	0	22-Apr-15	0	0	27-May-15	34	34
GC Notice To Proceed	4-May-15	4-May-15	4-May-15	0	4-May-15	0	29-May-15	25	25	29-May-15	25	25
Substantial Completion	1-Aug-15	1-Aug-15	3-Aug-15	2	3-Aug-15	2						

Activity has reached some or all completion dates

* Calendar Days



Project Description

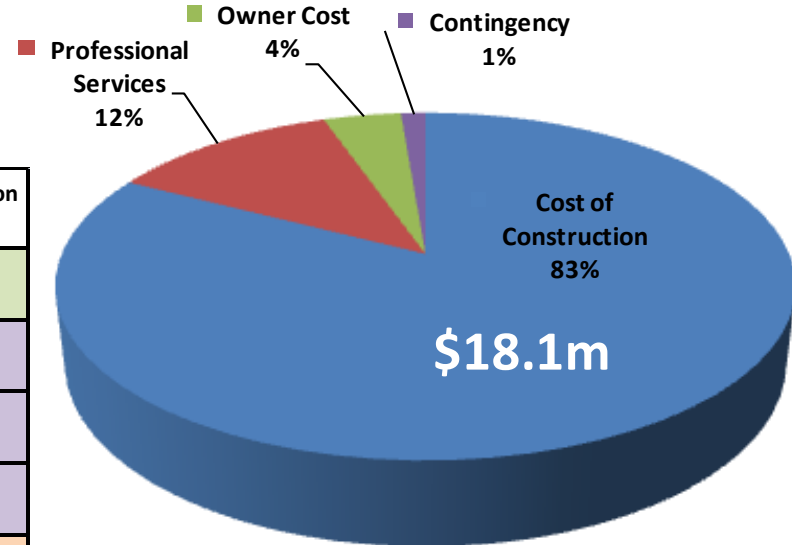
Project Description: A multiple site project with multiple construction areas

Current Project Phase: Close-Out & Construction

Scheduled Completion: August 2014 for Summer Work

Construction Duration: 63 Calendar Days for Summer Work

Projected Budget Breakout



Design Firm	School	Roof Replacement / Seismic Bracing	Seismic Improvements	Accessibility	Science Classroom Improvements	Construction Package
BLRB	Hosford (6-8)	X	X	X*	X	1
	James John (K-5)	X	X	X*		
FFA	Beach (K-8)		X	X*	X	2
	Woodlawn (PK-8)		X		X	
	Boise-Eliot/Humboldt (PK-8)	X	X		X	3
	Chief Joseph (PK-5)		X			
	King (PK-8)				X	4
	Vernon (PK-8)				X	
Oh Planning	Arleta (K-8)	X	X		X	5
	Creston (K-8)	X	X		X	
	Grout (K-5)		X			6
	Lane (6-8)		X		X	

X* = Includes Elevator

Comments

Photos

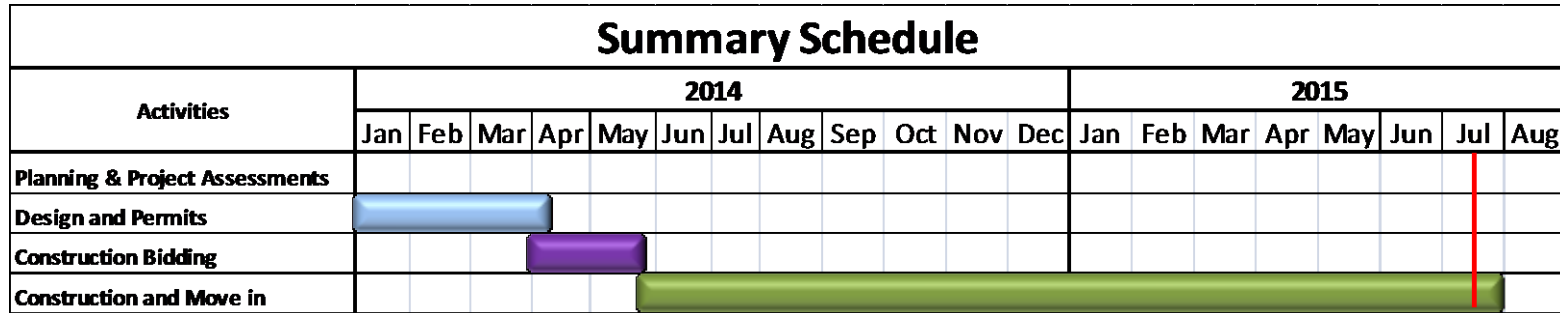
- Elevator at Beach has been installed and is working**
 - Expected to be final complete, tested and inspected by the end of July
- Hosford elevator complete**
 - In close-out
- James John elevator is 100% Complete**
 - Currently gathering close-out documents



Beach Elevator



Schedule



Significant Schedule Milestone Assessment

Significant Milestone Activity Name	Baseline (BL)		Schedule Update				Actual					
	Start	Finish	Start	Start Delta from BL*	Finish	Finish Delta from BL*	Start	Start Delta from BL*	Start Delta from Update	Finish	Finish Delta from BL*	Finish Delta from Update
Release Design Firm RFP	12-Jun-13	12-Jun-13	12-Jun-13	0	12-Jun-13	0	12-Jun-13	0	0	12-Jun-13	0	0
Design Notice to Proceed	15-Aug-13	15-Aug-13	19-Aug-13	4	26-Sep-13	42	19-Aug-13	4	0	15-Sep-13	31	-11
Project Assessment	16-Aug-13	16-Sep-13	20-Aug-13	4	7-Nov-13	52	20-Aug-13	4	0	7-Nov-13	52	0
Schematic Design / SD	17-Sep-13	23-Oct-13	8-Nov-13	52	12-Dec-13	50	12-Oct-13	25	-27	12-Dec-13	50	0
Design Development / DD	24-Oct-13	9-Dec-13	13-Dec-13	50	30-Jan-14	52	20-Nov-13	27	-23	7-Feb-14	60	8
Construction Documents / CD	10-Dec-13	24-Feb-14	5-Jan-14	26	10-Apr-14	45	5-Jan-14	26	0	12-Apr-14	47	2
Request GC Proposals	3-Mar-14	3-Mar-14	10-Apr-14	38	20-May-14	78	27-Mar-14	24	-14	21-May-14	79	1
Review GC Proposals	20-Mar-14	10-Apr-14	18-Apr-14	29	23-May-14	43	8-May-14	49	20	23-May-14	43	0
GC Notice To Proceed	1-May-14	1-May-14	19-May-14	18	30-May-14	29	4-Jun-14	34	16	20-Jun-14	50	21
Substantial Completion	25-Aug-14	25-Aug-14	22-Aug-14	-3	22-Aug-14	-3	29-Aug-14	4	7	29-Aug-14	4	7
Elevator Substantial Completion	21-Aug-15	21-Aug-15	31-Jul-15	-21	31-Jul-15	-21						

Activity has reached some or all completion dates

* Calendar Days



Project Description

Project Description: A multiple site project with multiple construction areas

Current Project Phase: Construction

Scheduled Completion: August 2015 (elevators later)

Construction Duration: 65 Calendar Days for Summer Work

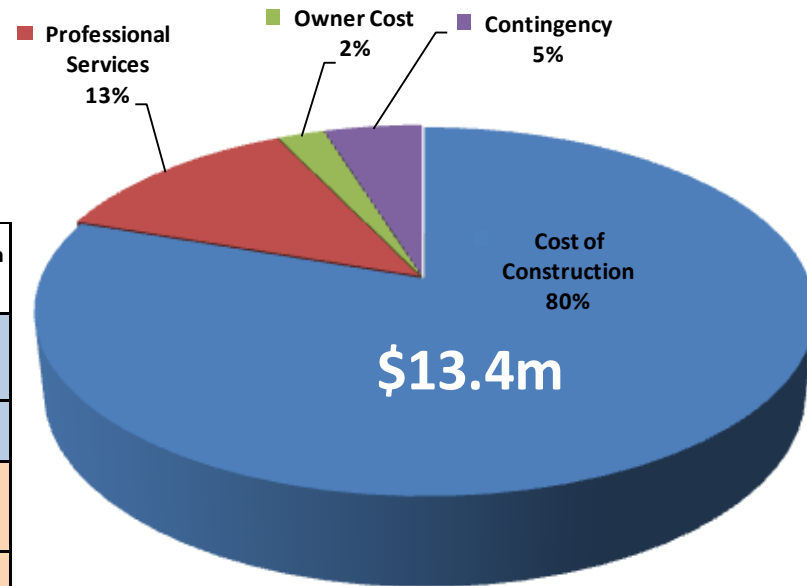
Design Firm	School	Roof Replacement / Seismic Bracing	Seismic Improvements	Accessibility	Science Classrooms Improvements	Construction Package
Oh Planning	Ainsworth (K-5)	X		X*		1
	Woodlawn (PK-8)			X*		
	Hayhurst (K-5)	X			X	2
Stephenson (K-5)	X					
Oh Planning	Creative Science / Clark (K-8)	X			X	3
	Llewellyn (K-5)		X			
	Buckman (K-5)	X		X		4
	Sabin (PK-8)	X		X	X	

X* = Includes Elevator

Comments

- All work is on schedule for student occupancy on August 27th
- Ainsworth school is the most complex and demanding of the sites due to the elevator scope, the site location, tight working and staging environment, and the amount of material that must be delivered, stored, and installed

Projected Budget Breakout



Photos





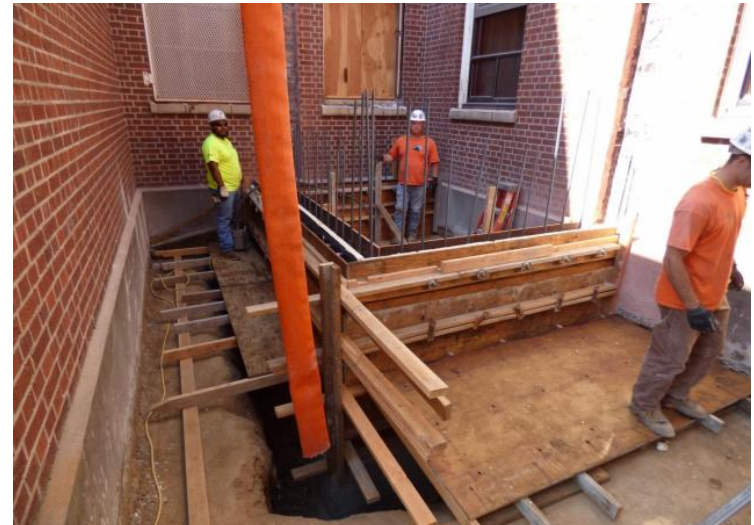
Llewellyn Seismic Framing



Buckman Roof/Seismic Work



Creative Science Classroom Upgrade

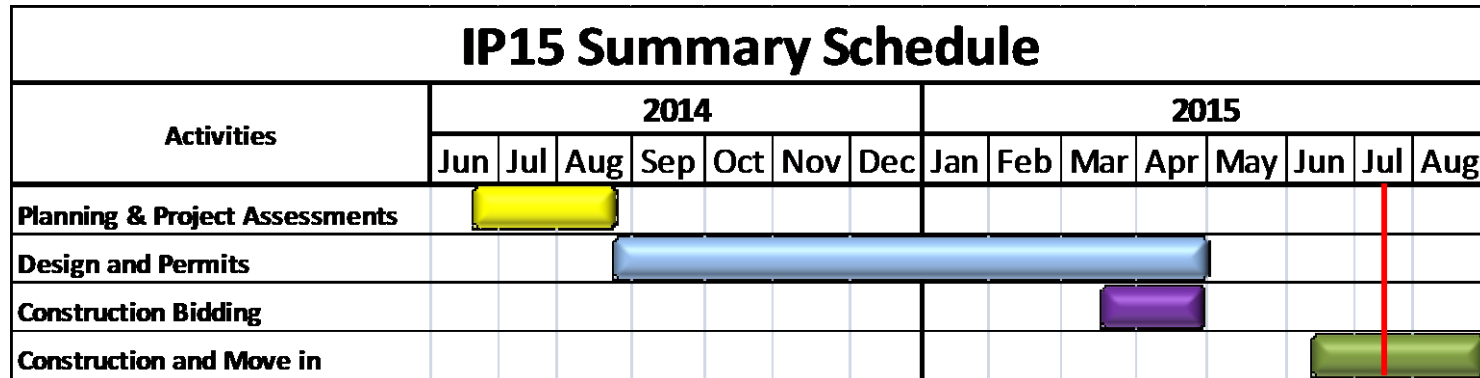


Woodlawn Elevator Shaft

July 2015



Schedule



Significant Schedule Milestone Assessment

Significant Milestone Activity Name	Baseline (BL)		Schedule Update				Actual					
	Start	Finish	Start	Start Delta from BL*	Finish	Finish Delta from BL*	Start	Start Delta from BL*	Start Delta from Update	Finish	Finish Delta from BL*	Finish Delta from Update
Release Design Firm RFP	10-Mar-14	15-Apr-14	10-Mar-14	0	15-Apr-14	0	10-Mar-14	0	0	15-Apr-14	0	0
Design Notice to Proceed	30-May-14	30-May-14	2-Jun-14	3	2-Jun-14	3	24-Jun-14	25	22	24-Jun-14	25	22
Project Assessment	2-Jun-14	18-Jul-14	2-Jun-14	0	21-Aug-14	34	24-Jun-14	22	22	17-Aug-14	30	-4
Schematic Design / SD	20-Jul-14	12-Sep-14	22-Aug-14	33	17-Oct-14	35	18-Aug-14	29	-4	7-Oct-14	25	-10
Design Development / DD	13-Sep-14	11-Nov-14	18-Oct-14	35	18-Dec-14	37	7-Oct-14	24	-11	18-Dec-14	37	0
Construction Documents / CD	12-Nov-14	4-Feb-15	19-Dec-14	37	18-Mar-15	42	19-Dec-14	37	0	18-Mar-15	42	0
Permit submittal and review	5-Feb-15	25-Feb-15	5-Feb-15	0	30-Apr-15	64	5-Mar-15	28	28	19-Mar-15	22	-42
Request GC Proposals	2-Mar-15	22-Mar-15	24-Mar-15	22	16-Apr-15	25	5-Mar-15	3	-19	16-Apr-15	25	0
Review GC Proposals	23-Mar-15	30-Mar-15	17-Apr-15	25	21-Apr-15	22	26-Mar-15	3	-22	17-Apr-15	18	-4
GC Notice To Proceed	30-Apr-15	30-Apr-15	28-Apr-15	-2	28-Apr-15	-2	8-May-15	8	10	8-May-15	8	10
Substantial Completion	23-Aug-15	23-Aug-15	21-Aug-15	-2	21-Aug-15	-2						
Elevator Substantial Completion	30-Apr-16	30-Apr-16	19-Aug-16	111	19-Aug-16	111						

Activity has reached some or all completion dates

* Calendar Days



Project Description

Project Description: Science Classroom and ADA Upgrades to 18 Schools

Current Project Phase: Construction

Scheduled Completion: August 2015

Construction Duration: 65 Calendar Days for Summer Work

School	ADA	Science Classrooms
Astor		X
da Vinci		X
George		X
Gray		X
Irvington		X
Lee		X
Markham	X	
Meek	X	
Peninsula	X	X

Contract 1

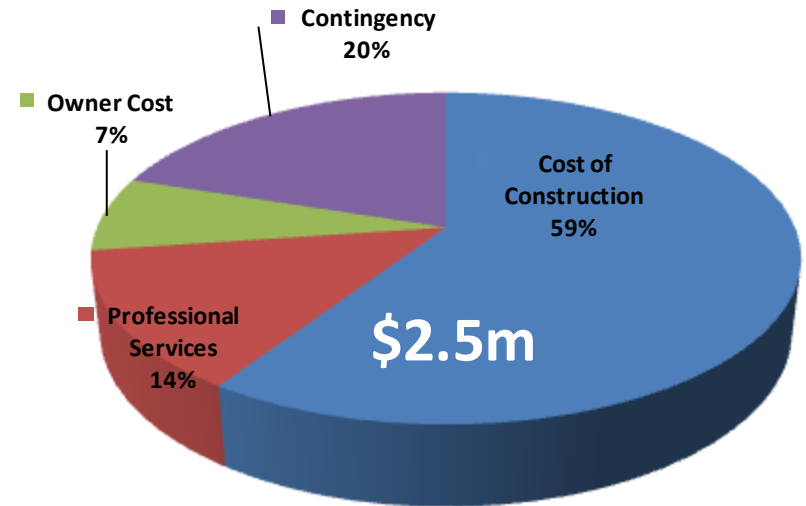
School	ADA	Science Classrooms
Skyline		X
West Sylvan	X	X
Bridger		X
Harrison Park	X	X
Holladay Center	X	
Lent	X	X
Mt. Tabor		X
Richmond	X	
Roseway Heights		X

Contract 2

Comments

1. Construction is ongoing and on schedule

Projected Budget Breakout



Photos



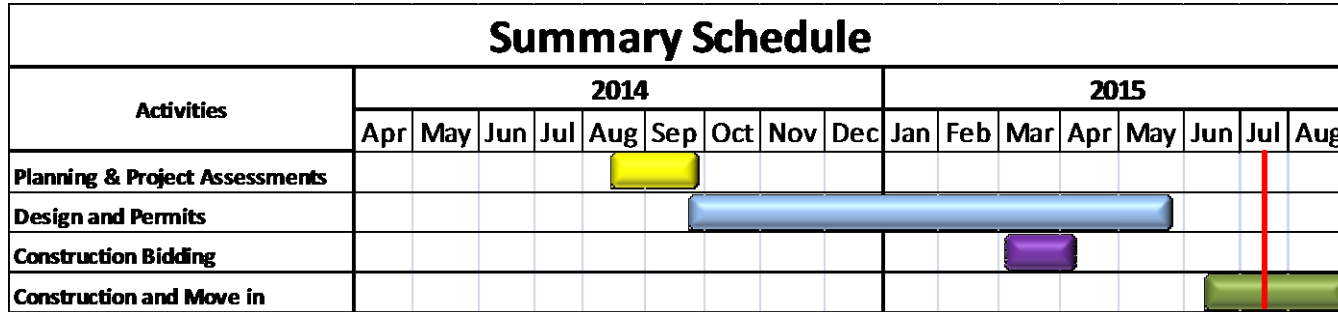
New Electrical Outlets at Peninsula



New Casework at George



Schedule



Significant Schedule Milestone Assessment

Significant Milestone Activity Name	Baseline (BL)		Schedule Update				Actual					
	Start	Finish	Start	Start Delta from BL*	Finish	Finish Delta from BL*	Start	Start Delta from BL*	Start Delta from Update	Finish	Finish Delta from BL*	Finish Delta from Update
Design Notice to Proceed	25-Jul-14	25-Jul-14	25-Jul-14	0	25-Jul-14	0	12-Aug-14	18	18	12-Aug-14	18	18
Project Assessment	25-Jul-14	25-Aug-14	25-Jul-14	0	25-Aug-14	0	13-Aug-14	19	19	25-Sep-14	31	31
Schematic Design / SD	26-Aug-14	26-Sep-14	26-Aug-14	0	26-Sep-14	0	26-Sep-14	31	31	12-Nov-14	47	47
Design Development / DD	27-Sep-14	25-Nov-14	27-Sep-14	0	28-Nov-14	3	13-Nov-14	47	47	19-Dec-14	24	21
Construction Documents / CD	26-Nov-14	24-Mar-15	29-Nov-14	3	27-Feb-15	-25	20-Dec-14	24	21	13-Feb-15	-39	-14
Request GC Proposals	20-Apr-15	20-Apr-15	9-Mar-15	-42	7-Apr-15	-13	6-Mar-15	-45	-3	7-Apr-15	-13	0
Review GC Proposals	21-May-15	14-Jun-15	8-Apr-15	-43	9-Apr-15	-66	8-Apr-15	-43	0	9-Apr-15	-66	0
Permit submittal and review	15-Jun-15	25-May-15	2-Feb-15	-133	26-May-15	1	2-Feb-15	-133	0	8-May-15	-17	-18
GC Notice To Proceed	15-Jun-15	15-Jun-15	30-Apr-15	-46	30-Apr-15	-46	11-May-15	-35	11	11-May-15	-35	11
Substantial Completion	18-Aug-15	18-Aug-15	10-Aug-15	-8	10-Aug-15	-8						

Activity has reached some or all completion dates

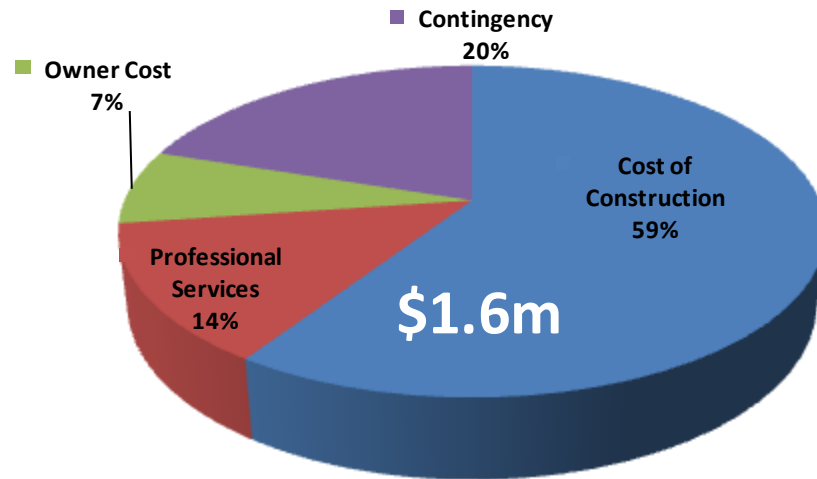
* Calendar Days



Project Description

Project Description: Improvements to the Maplewood K-5 Roof
Current Project Phase: Construction
Construction Start: June 2015
Construction Duration: 65 Calendar Days for Summer Work
Scheduled Completion: August 2015
Design Firm: Oh Planning and Design
Contractor: 2KG Contractors

Projected Budget Breakout



Comments

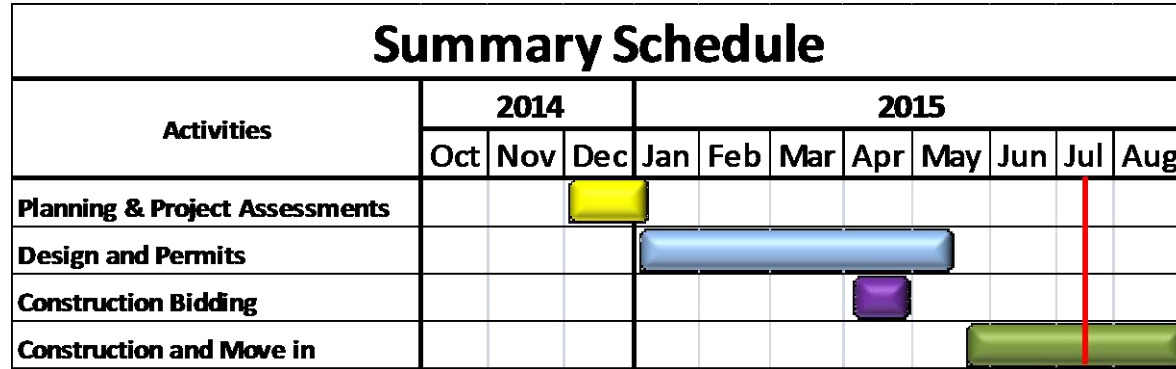
1. 2KG started work on 6/17/15 and has been able to gain a few extra days on the schedule due to a high productivity rate
2. The submittal process has worked well and the review and approval process has been timely by A/E
3. Minimal RFIs have been issued and answered to date indicating that the drawings reflect actual field conditions and have been well coordinated

Photos





Schedule



Significant Schedule Milestone Assessment

Significant Milestone Activity Name	Baseline (BL)		Schedule Update				Actual					
	Start	Finish	Start	Start Delta from BL*	Finish	Finish Delta from BL*	Start	Start Delta from BL*	Start Delta from Update	Finish	Finish Delta from BL*	Finish Delta from Update
Design Notice to Proceed	7-Jan-15	7-Jan-15	7-Jan-15	0	7-Jan-15	0	7-Jan-15	0	0	7-Jan-15	0	0
Schematic Design / SD	8-Jan-15	24-Dec-14	8-Jan-15	0	24-Dec-14	0	8-Jan-15	0	0	30-Jan-15	37	37
Design Development / DD	2-Jan-15	23-Feb-15	2-Jan-15	0	23-Feb-15	0	2-Feb-15	31	31	23-Feb-15	0	0
Construction Documents / CD	24-Feb-15	2-Apr-15	24-Feb-15	0	2-Apr-15	0	24-Feb-15	0	0	2-Apr-15	0	0
Permit submittal and review	3-Apr-15	30-May-15	3-Apr-15	0	1-Jun-15	2	8-Apr-15	5	5	13-May-15	-17	-19
Request GC Proposals	8-Apr-15	14-May-15	8-Apr-15	0	28-Apr-15	-16	7-Apr-15	-1	-1	28-Apr-15	-16	0
Review GC Proposals	15-May-15	16-May-15	29-Apr-15	-16	30-Apr-15	-16	29-Apr-15	-16	0	30-Apr-15	-16	0
GC Notice To Proceed	6-Jun-15	6-Jun-15	20-May-15	-17	20-May-15	-17	27-May-15	-10	7	27-May-15	-10	7
Substantial Completion	21-Aug-15	21-Aug-15	21-Aug-15	0	21-Aug-15	0						

Activity has reached some or all completion dates

* Calendar Days



Project Description

Project Description: A multiple site project with multiple construction areas

Current Project Phase: Design

Scheduled Completion: August 2016

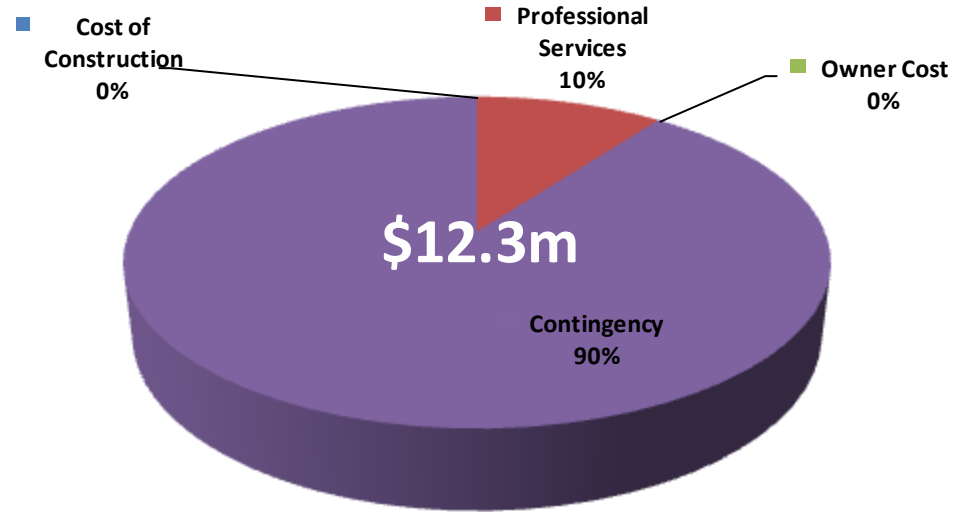
Construction Duration: 78 Calendar Days for Summer Work

Design Firm: Oh Planning & BBL

Contractor: TBD

School	Roof Replacement / Seismic Bracing	Seismic Improvements	Accessibility	Science Classrooms Improvements	Windows
Abernethy (K-5)	X	X			
Cesar Chavez (K-8)			X*	X	
Cleveland HS	X	X	X		
Fernwood - Beverly Cleary (2-8)				X	
Grout (K-5)					X
Jefferson HS		X	X		
MLC (K-12)		X	X	X	
Scott (K-8)			X*	X	
Sellwood (6-8)	X			X	
Sunnyside (K-8)				X	
Vestal (K-8)				X	
Winterhaven (K-8)				X	

Projected Budget Breakout



Comments

1. Soliciting Geo-tech and Surveyor firms for the schools receiving elevators
2. OHPD Contract executed and Project Assessment is underway
3. BBL contract is in review

Photos





Schedule

Summary Schedule

Activities	2015												2016											
	Jan	Feb	Mar	Apr	May	Jun	Jul	Aug	Sep	Oct	Nov	Dec	Jan	Feb	Mar	Apr	May	Jun	Jul	Aug	Sep	Oct	Nov	Dec
Planning & Project Assessments																								
Design and Permits																								
Construction Bidding																								
Construction and Move in																								

Significant Schedule Milestone Assessment

Significant Milestone Activity Name	Baseline (BL)		Schedule Update				Actual					
	Start	Finish	Start	Start Delta from BL*	Finish	Finish Delta from BL*	Start	Start Delta from BL*	Start Delta from Update	Finish	Finish Delta from BL*	Finish Delta from Update
Release Design Firm RFP	9-Feb-15	17-Mar-15	9-Feb-15	0	17-Mar-15	0	9-Feb-15	0	0	17-Mar-15	0	0
Design Notice to Proceed	15-May-15	15-May-15	12-Jun-15	28	12-Jun-15	28	23-Jun-15	39	11	23-Jun-15	39	11
Project Assessment	15-May-15	2-Jul-15	15-May-15	0	20-Jul-15	18	23-Jun-15	39	39			
Schematic Design / SD	3-Jul-15	26-Aug-15	21-Jul-15	18	15-Sep-15	20						
Design Development / DD	27-Aug-15	25-Oct-15	16-Sep-15	20	20-Nov-15	26						
Construction Documents / CD	26-Oct-15	18-Jan-16	21-Nov-15	26	20-Feb-16	33						
Permit submittal and review	30-Jan-16	29-May-16	30-Jan-16	0	10-Apr-16	-49						
Request GC Proposals	1-Feb-16	21-Feb-16	1-Mar-16	29	24-Mar-16	32						
Review GC Proposals	22-Feb-16	11-Mar-16	25-Mar-16	32	12-Apr-16	32						
GC Notice To Proceed	25-Mar-16	25-Mar-16	20-Apr-16	26	20-Apr-16	26						
Substantial Completion	25-Aug-16	25-Aug-16	25-Aug-16	0	25-Aug-16	0						
Elevator Substantial Completion	30-Apr-17	30-Apr-17	30-Apr-17	0	30-Apr-17	0						

Activity has reached some or all completion dates

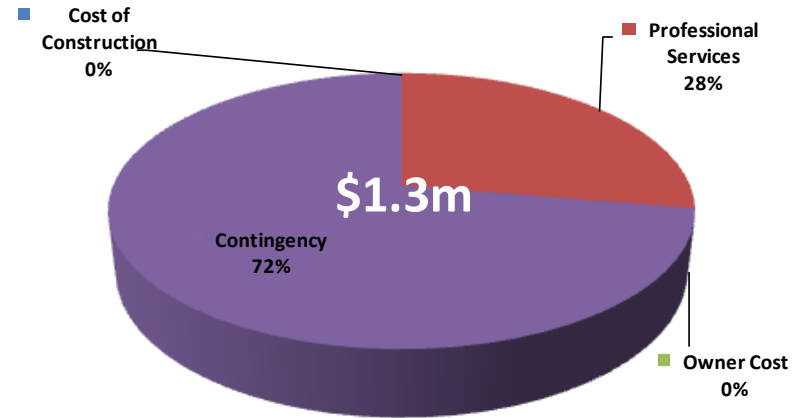
* Calendar Days



Project Description

Project Description: Master Planning for three campuses
Current Project Phase: Pre-Design
Scheduled Completion: May 2016
Design Firms: TBD

Projected Budget Breakout



Benson Campus



Lincoln High School



Madison High School

Comments

Photos

1. The Master Planning budget has increased from \$1m to \$1.3m
2. The Lincoln Master Planning budget has been forecasted
 - Benson and Madison budgets are to be forecasted
3. A design firm for the Benson Campus Master Plan is in the selection process





Schedule

Summary Schedule																					
Activities	2015									2016											
	May	Jun	Jul	Aug	Sep	Oct	Nov	Dec	Jan	Feb	Mar	Apr	May	Jun	Jul	Aug	Sep	Oct	Nov	Dec	
Benson Campus				Ed Spec					Master Plan												
Lincoln HS																					
Madison HS																					



#	Recommendation	Response	Status
1	Update the Program Management Plan	Concur with Comment	Complete
2	Evaluate the current project scheduling process	Concur	Complete
3	Annual work plan for Heery	Nonconcur	Complete
4	Improve the Balanced Scorecard	Concur/Nonconcur	Complete
5	Better match the AG's Model Public Contracts Rules	Concur with Comment	Working
6	Consider adopting the Attorney General's Model Contracting Rules	Concur	Complete
7	Consider increasing the change order authority	Concur with Comment	Complete
8	ITB language and unit prices	Concur	Complete
9	Lowest responsible bid will be based upon Base Bid and Alternatives	Concur	Complete
10	Specify a maximum allowable profit & overhead for Change Order pricing	Concur with Comment	Complete
11	Revise RFP ranking methodology	Concur with Comment	Complete
12	RFP scoring guidelines for specific categories	Concur	Complete
13	Consider increasing the share of deductible per Builders Risk occurrence	Concur with Comment	Complete
14	CM/GC services RFP revisions	Concur	Complete
15	More proscriptive guidelines for the CM/GC to procure subcontracts	Concur	Working
16	Clarify GMP cost refinements	Concur	Complete
17	Clarify District intent for P&OH to be allowed to the CM/GC for changes	Concur with Comment	Working
18	Improve the efficiency of the master planning and design efforts	Concur	Working
19	Complete PPS Design Standards and Guidance	Concur	Complete
20	Project plans and SOPs be developed and implemented by the end of calendar year 2014	Concur	Complete
21	e-Builder filing and indexing	Concur	Complete
22	Streamlined RFI steps	Concur with Comment	Complete
23	Validate PCO process before IP 2014 change order work proceeds	Concur with Comment	Complete
24	Responsibility by Participant Matrix	Concur	Complete
25	PeopleSoft & e-Builder compatibility	Concur	Complete
26	Update and revise the bond communication plan	Concur	Complete
27	Improve public engagement	Concur with Comment	Complete

This Report 93% Complete – Last Report 85% Complete



#	Abbreviated Recommendation	Response	Status
1	OSM should ensure that change order work occur only upon appropriately authorized change order execution	Concur	Working
2	Streamline the submittal process on e-Builder	Concur	Complete
3	Incorporate appropriate design recommendations from IP lessons learned	Concur	Working
4	Develop plans for utilizing available contingencies and reserves	Concur with comment	Complete
5	Establish written policies and procedures in the SOP pertaining to GMP spending	Concur with comment	Working
6	Consider increasing the funding for master planning	Concur with comment	Complete
7	Fully involve user groups and stakeholders in updating the LRFP and Ed Specs	Concur	Working
8	Update the currently posted PMP	Concur	Complete
9	Critical elements of the PTMP should be put in place at the beginning of each project	Concur	Working
10	Only use escalation reserve to fund scope changes when escalation will not be needed for other projects	Complete	Complete
11	OSM should continue to develop systems for uniform filing of documents in e-Builder	Concur with comment	Working
12	Clarify where and when SOP requirements and procedures are proscribed for CM/GC and D-B-B projects	Concur	Working
13	Revise the SOP to provide greater explanation of and requirements for value engineering, Project Safety and Security Plans, Site Safety Plans, and project quality	Concur	Working
14	Update the SOP to provide more detailed and accurate information with respect to the alternative contracting	Concur	Working
15	OSM should clarify which projects require the use of 1.5 percent for green technology	Concur	Working
16	OSM should consider revising elements of the budget perspective reporting	Nonconcur	Complete
17	OSM should identify opportunities for savings in payroll and management support line items	Concur with comment	Complete
18	OSM should consider adding specific statutory responsibility requirements to future ITBs	Complete	Complete
19	OSM/P&C should ensure that RFPs clearly state the criteria and weighting for making a choice of one or more firms if an RFP permits one or more firms to be selected by an RFP	Complete	Complete
20	OSM and FAM should consider internal training sessions on public contract procurement law	Concur	Complete
21	Begin work only with signed and executed contracts	Concur	Working
22	OSM should remove article 19e from existing and future CM/GC contracts	Concur	Complete
23	OSM should modify contract language to specify how early work may occur	Concur	Working
24	Project communication plans are to be prepared at the start of new projects	Concur	Working
25	OSM and PPS academic leadership should jointly develop an involvement plan	Concur	Working
26	- Provide more flexibility in the selection of subcontractors PPS contracts - Obtain a written legal opinion about best practices and risks addressing the MWESB aspirational goal	Concur with comment	Working

This Report 42% Complete – Initial Report 15% Complete



BAC Discussion

Next Board Presentation

Tuesday, August 4

Next BAC Meeting

Wednesday, October 21 (confirm)

Place: TBD